



KONICA MINOLTA

magicolor 8650DN

DO BUSINESS BETTER

_FULL COLOR
_LARGE FORMAT
_LASER
_PRINTER

magicolor 8650

CONNECT_

COMMUNICATE_

CONTROL_

PRINT PRODUCTIVELY. PRINT CREATIVELY.

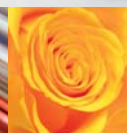
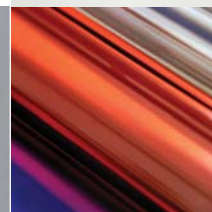
The magicolor® 8650DN color laser printer offers resources that far surpass industry standards to deliver performance, productivity, and perfection. It serves the department or workteam with fast 35 ppm speed and job pipelining that keeps the workflow moving. This large-format printing solution has versatile, highly-expandable media options and document finishing for in-house publishing and creative design. And it emphasizes usability, with desktop tools and automated color control, to simplify everyday operation. For perfect prints, the magicolor® 8650DN features revolutionary 19,200 x 600 dpi-class quality to keep your documents—and your image—looking their best.

The essentials of imaging

magicolor 8650DN

- ▶ 35 PPM IN COLOR AND B&W; FIRST PAGE IN 5.9 SECONDS (B&W)
- ▶ ACCURATE 19,200 X 600 DPI-CLASS PHOTOART CONTONE COLOR
- ▶ 1 GHZ POWERPC CPU & EMPERON™ PRINT SYSTEM
- ▶ 1024 MB RAM, OPTIONAL 60 GB HARD DRIVE ENHANCE PRODUCTIVITY
- ▶ POSTSCRIPT 3 & PCL 6 EMULATIONS
- ▶ DIRECT PRINT PDF, XPS, JPEG & TIFF FILES
- ▶ NATIVE XPS INTERPRETER FOR WINDOWS VISTA, INCLUDING WSD SUPPORT
- ▶ 3-WAY 1,150-SHEET INPUT, EXPANDABLE TO 3,650 SHEETS
- ▶ BUILT-IN AUTO DUPLEX; OPTIONAL STAPLE, HOLE PUNCH, FOLD AND SADDLE STITCH FINISHING FOR IN-HOUSE PUBLISHING
- ▶ UP TO 12.25" X 47.24" PAGES; THICK STOCK UP TO 271 G/M²
- ▶ 150,000 PAGE-PER-MONTH MAXIMUM DUTY CYCLE

EMPERON DRIVEN.
MORE THAN JUST
HARDWARE, EMPERON
IS AN ARCHITECTURE
THAT DRIVES THE
PRINTER'S PERFORM-
ANCE, SIMPLICITY OF
USE, AND SATISFYING
USER EXPERIENCE.



DO BUSINESS BETTER



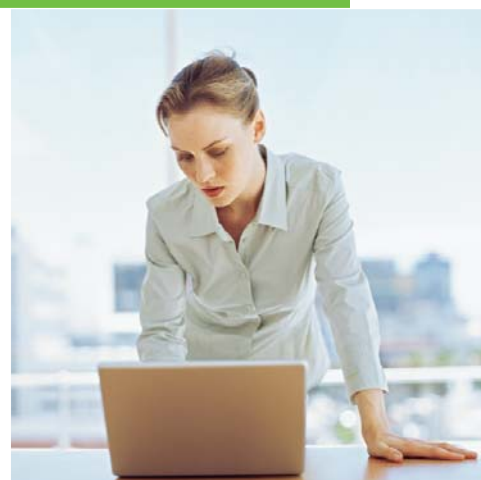
COLOR POWERHOUSE

Tandem speed and Emperon™ pipeline productivity. Get prints at 35 ppm color and b&w, with your first b&w page in under 6 seconds. Behind the scenes a 1 GHz PowerPC processor, full gigabyte of RAM, and Gigabit Ethernet interface pipeline multiple jobs for non-stop productivity.

PERFECT COLOR & MEDIA FLEXIBILITY

On-the-mark color. 5-bits/pixel contone technology delivers 19,200 x 600 dpi-class quality with 256 smooth gradations. Advanced image processing and edge enhancement mode ensure fine lines and small-point text are sharp, clear, and complete. And the magicolor 8650DN's enhanced Automatic Density Control (eAIDC) means color reproduction stability from first print to last.

Portfolio of possibilities. The magicolor 8650DN supports media from post-card to 12.25" x 47.24", including 12" x 18" for full-bleed tabloid proofs complete with cropmarks. Every input source handles stocks up to a heavy 256 g/m² (94 lb. cover equivalent), and up to 271 g/m² via the multipurpose tray for extra versatility. Load trays with different media to manage all your business and creative applications.



SECURE PRINTING. PROTECT DATA AND ENSURE DOCUMENTS MEANT FOR YOUR EYES ONLY STAY THAT WAY. OPTIONAL ENCRYPTION KIT, PERSONAL USERBOXES, AND THE BUILT-IN NETWORK SECURITY OF TCP/IP V6 MAKE IT POSSIBLE.

IN-HOUSE PUBLISHING

On-demand, short-run production. Create professional documents in-house that project your best image. The magicolor 8650DN has a 3-way, 1,150-sheet paper input system expandable to 3,650 sheets for high-volume production. A built-in automatic duplexer delivers two-sided documents while using 50% less paper. Add staple, hole punch, fold, and mailbin finishing options for ready-to-deliver documents.



CREATIVE EDGE WITH VERSATILE MEDIA SUPPORT. THE PRINTER SUPPORTS 12.25" X 18" MEDIA—PERFECT FOR COLOR PROOFS WITH CROPS & COLOR BARS—AND UP TO BANNER SIZE. THICK STOCK SUPPORT UP TO 271 GSM SURPASSES INDUSTRY STANDARDS TO GIVE YOU A CREATIVE EDGE WHEN DEVELOPING YOUR BUSINESS DOCUMENTS AND YOUR PROFESSIONAL IMAGE.



PERFORMANCE ON DEMAND. FAST WARM-UP TIME, QUICK FIRST PAGE OUT, AND 35 PPM SPEED MEAN YOU GET YOUR PRINTS ALMOST AS FAST AS YOU SEND THEM. THAT GOES FOR YOU AND THE ENTIRE CROSS-PLATFORM WORKTEAM.

FINISHING OPTIONS



- ▶ AUTO DUPLEXING
- ▶ CORNER STAPLE
- ▶ 2-POSITION STAPLE
- ▶ SADDLE STITCH STAPLE
- ▶ FOLDING
- ▶ 2/3-HOLE PUNCH
- ▶ ADDRESSABLE MAILBINS

SIMITRI HD®

PULVERIZED



SPECTACULAR COLOR FOR PROFESSIONAL RESULTS. KONICA MINOLTA'S EXCLUSIVE SIMITRI® HD COLOR POLYMERIZED TONER, 5-BIT PER PIXEL CONTONE COLOR, AND EDGE ENHANCEMENT TECHNOLOGY RESULT IN PHOTOREALISTIC IMAGES, SMOOTH GRADATIONS, AND SHARP, CLEAR TEXT AND LINES. THIS LEVEL OF QUALITY TRANSLATES TO PROFESSIONAL PRINTS THAT PORTRAY YOUR BEST IMAGE.

FEATURES, OPTIONS & BENEFITS

More to speed than pages per minute. The magicolor 8650DN's ultra-fast CPU and advanced Emperon print system process print jobs at high speed for best-in-class performance.

Integrated workflow. Equipped with a Gigabit Ethernet interface, the magicolor 8650DN fits right into mixed-platform teams. Windows, Macintosh, and Linux compatible, it features PostScript 3 and PCL 6 emulations and includes TCP/IP, NetWare, EtherTalk, and WSD protocols.

Precise color matching. Let the magicolor 8650DN's built-in ICC color matching system, dynamic contone screening, and object segmentation automatically adjust color for you. Adjust color and halftones by object, or download ICC profiles for specific color control.

100% duplex productivity. An exclusive paper-crossing system optimizes the paper path used when printing two-sided pages to maintain 100% speed and productivity.

Data protection. Use the optional 60 GB hard disk to store fonts and forms, and set up user boxes for individual document control. The built-in network security of TCP/IP v6 adds a new level of data protection.

Direct print and save time. Print JPEG, TIFF, PDF and XPS files directly. Simply drag and drop files in PageScope Web Connection to print (hard disk required).

Office-smart print control. Desktop point-and-click commands put printer control at your fingertips. Activate email alerts for offline conditions. View supply levels from your desk before printing big jobs. And rely on InfoLine, an indicator on the control panel and input trays, that lets you know at a glance if the printer requires attention.

High-yield supplies—low downtime. Rated toner yield of 20,000 prints per color, 26,000 prints for black, and imaging units that yield from 90,000 to 120,000 prints, put an end to frequent replacement. Select toner-saving mode to decrease toner usage up to 60% on drafts and reference materials—a great money saver.

Laser reliability. A duty cycle of up to 150,000 pages per month, long-lasting 400,000 print fuser life, and state-of-the-art laser technology add up to years of reliable service.

VERSATILE OPTIONS

- 1 150-sheet multipurpose tray supports media from postcard to 12.25" x 47.24", up to a heavy 271 g/m².
- 2 Two 500-sheet cassettes eliminate frequent paper replenishing.
- 3 Automatic duplexer is standard for two-sided page printing.
- 4 Input Options
 - ▶ 500-sheet paper feed cabinet includes cassette and storage drawer.
 - ▶ 1,000-sheet paper feed cabinet includes two 500-sheet cassettes.
 - ▶ 2,500-sheet large-capacity paper feed cabinet (shown) brings paper input to its 3,650 sheet maximum.
 - ▶ Printer desk features a convenient storage drawer.
- 5 Finisher Options
 - ▶ Staple Finisher (shown) includes 2-bin output to collate and offset print. Offers corner and 2-position stapling.
 - ▶ Floor finisher collates; offset prints; has corner, 2-position, and saddle-stitch stapling; creases pages to create booklets up to 60 pages.

Also Available

- ▶ Saddle stitcher for staple finisher. Crease and saddle-stitch up to 11" x 17" pages for bookletmaking.
- ▶ Punch kits for finisher options. Adds 2/3-hole punch capabilities.
- ▶ Mailbin kit adds four addressable mailbins to staple finisher.
- ▶ Banner tray supports extra-long media used for banner printing.





magicolor 8650DN

GENERAL SPECIFICATIONS

PRINTING PROCESS

PRINT METHOD:

Electrophotographic Laser

PRINT SPEED*:

Color: 35 ppm

Monochrome: 35 ppm

*Exact print speed differs depending on system configuration, software application, driver and document complexity.

FIRST-PAGE OUTPUT TIME:

Color: 8.5 seconds

Monochrome: 5.9 seconds

RESOLUTION:

19,200 x 600 dpi-class with PhotoART
(600 x 600 x 5 bit contone)

MAXIMUM MONTHLY DUTY CYCLE:

150,000 prints

HARDWARE AND SOFTWARE CAPABILITIES

PROCESSOR:

1 GHz PowerPC G4 MC7447A

MEMORY:

1024 MB DDR SDRAM

HARD DISK DRIVE (optional):

60 GB

SECURITY OPTIONS:

Encryption Kit*

Encode data on Hard Disk Drive for security
ISO 15408 available on request

*Requires optional Hard Drive

OPERATING SYSTEM COMPATIBILITY:

Windows Vista

Windows Vista x64

Windows Server 2003

Windows Server 2003 x64

Windows XP

Windows XP x64

Windows 2000

Windows NT4 (SP6+)

Macintosh OS X (v10.2+)

Macintosh OS X (Intel) (v10.4+)

Linux Red Hat Enterprise

PRINTER EMULATIONS:

PostScript 3

PCL 6

XPS Direct Print*

PDF 1.6 Direct Print*

JPEG/TIFF Direct Print*

*Requires optional Hard Drive

PRINTER MANAGEMENT:

PageScope Net Care

PageScope Web Connection

PageScope Network Setup

PageScope NDPS Gateway

PageScope Direct Print

PageScope Data Administrator

PageScope Job Spooler

COLOR SUPPORT:

Enhanced Automatic Image Density Control
(eAIDC)

ICC device profiles

Automatic ICC-based color matching

Dynamic Contone Screening

PANTONE Color Tables

SWOP, Commercial, SNAP, EuroColor, DIC, and

TOYO press emulations

INTERFACE SUPPORT

STANDARD INTERFACES:

Gigabit Ethernet (10/100/1000BaseTX)

USB 2.0

ETHERNET PROTOCOLS:

TCP/IP (IPv4/IPv6, IPsec, SSL)

AppleTalk / EtherTalk

IPX/SPX (Netware 4/5/6)

ARP

Bonjour

BOOTP

DHCP, AutoIP

DNS, DynamicDNS

FTP

HTTP

ICMP

IPP1.1

LDAP

LPR/LPD

NetBEUI, SMB

NTP

SMTP

RAW Socket

SNMP 1.2

UDP

WSD

PAPER HANDLING

STANDARD PAPER INPUT:

150-sheet multipurpose tray

2 - 500-sheet cassettes

OPTIONAL PAPER INPUT:

500-sheet paper feed cabinet [PC-106]

(500-sheet cassette, storage area)

1,000-sheet paper feed cabinet [PC-205]

(2 - 500-sheet cassettes)

Large-capacity paper feed cabinet [PC-406]

(2,500-sheet cassette)

Printer desk [DK-505]

Banner tray [MK-713]

STANDARD PAPER OUTPUT:

250-sheet face-down output tray

OPTIONAL PAPER OUTPUT:

Staple finisher* [FS-519]

Output tray** [OT-602]

Punch kit** [PK-515]

Saddle stitcher** [SD-505]

4-bin mailbin kit** [MT-502]

*Requires a printer desk or paper feed cabinet option

**Requires staple finisher

Floor finisher* [FS-609]

Punch kit** [PK-501]

*Requires a printer desk or paper feed cabinet option

**Requires floor finisher

STANDARD AUTOMATIC DUPLEXER:

For two-sided printing (plain paper only)

PAPER SIZES SUPPORTED:

150-sheet multipurpose tray:

Letter

Legal

Ledger

4" x 6"

12" x 18"

12.25" x 18"

Executive

Folio

Govt. Letter

Statement

A3, A4, A5, A6

B4, B5, B6

Custom sizes:

(W) 3.54"-12.25" to (L) 5.5"-47.24"

(W) 90-311.1 mm to (L) 139.7-1200 mm

Envelopes:

Monarch, Com 10, DL, B5 (ISO), C5

500-sheet cassettes / paper feed cabinets:

Letter

Legal

Ledger

12" x 18"

12.25" x 18"

Folio

Statement

A3, A4

B4, B5, B6

*Supported through lower standard cassette only

Duplexer:

Letter

Legal

Ledger

12" x 18"

12.25" x 18"

Executive

Folio

Govt. Letter

A3, A4, A5

B4, B5

Custom sizes:

(W) 5.5"-12.25" to (L) 5.8"-18"

(W) 139.7-311.1 mm to (L) 148-457.2 mm

PRINTABLE AREA:

0.17" (4.2 mm) from all edges

46.9" maximum print length

11.36" maximum print width (when in banner
printing mode)

PAPER WEIGHTS:

Plain paper: 16-24 lb. Bond (60-90 g/m²)

Thick Stock:

33-94 lb. cover (90-256 g/m²)

94-100 lb. cover (256-271 g/m²) - letter, A4,

ledger, A3 via multipurpose tray only

Duplexer: 18-24 lb. Bond (64-90 g/m²)

PRINT MEDIA:

Plain Paper

Recycled Paper

Letterhead

Thick Stock

Glossy Stock

Photo Stock

Transparencies

Laser Quality Labels

Envelopes

Postcards

PHYSICAL

TYPE:

Laser printer with Emperon Print System

DIMENSIONS (WXDXH):

25.3" x 27.9" x 25.1"

(643 x 708 x 637 mm)

WEIGHT:

195.8 lbs (89 kg) - w/ consumables

257.4 lbs (117 kg) - as shipped

ELECTRICAL

POWER REQUIREMENTS:

120 VAC, 12A, 60 Hz

220-240 VAC, 8A, 50/60 Hz

POWER CONSUMPTION:

Operating: 900W Avg., 1,500W Max.

Standby: 200W Avg.

ENERGY STAR COMPLIANT*:

17Wh or less

*The addition of some options, in some combinations,
may cause the product to become non-compliant.

ENVIRONMENTAL

TEMPERATURE REQUIREMENTS:

Operating: 50° to 86° F (10° to 30° C)

Non-Operating: 32° to 95° F (0° to 35° C)

HUMIDITY:

Operating: 15% to 85% RH

Non-operating: 15% to 85% RH

NOISE LEVELS:

Operating: ≤67 dB(A)

Standby: ≤43 dB(A)

REGULATORY/SAFETY CONFORMITY:

UL

cUL

CDRH

CE-Marking

FCC-A

TUVRh-AR-S

CONSUMABLES*:

In-Box Toner: Cyan, Magenta, Yellow (yield up
to 6,000 pages @ 5% coverage); Black
(yields up to 9,000 pages @ 5% coverage)

Replacement Toner: Cyan, Magenta, Yellow
(yield up to 20,000 pages @ 5% coverage);
Black (yields up to 26,000 pages @ 5%
coverage)

Imaging Units: Cyan, Magenta, Yellow (yield
up to 90,000 pages @ 5% coverage);
Black (yields up to 120,000 pages @
5% coverage)

Waste Toner Box (yields up to 200,000 pages
b&w; 50,000 pages color)

*The stated life expectancy of each consumable is based
on printing under specific operating conditions such as
page coverage for a particular page size (5% coverage of
letter/A4). The actual consumable's life will vary depending
on the use and other printing variables including page
coverage, page size, media type, continuous or intermittent
printing, ambient temperature, and humidity.

TYPEFACES:

136 resident PostScript fonts

81 PCL fonts

WARRANTY:

1-year on-site

Office imagery courtesy of Knoll, Inc.

© 2008 KONICA MINOLTA BUSINESS SOLUTIONS
U.S.A., INC. All rights reserved. Reproduction in
whole or in part without written permission is
prohibited. Konica Minolta and The essentials of
imaging are trademarks of KONICA MINOLTA
HOLDINGS, INC. PageScope is a trademark of
KONICA MINOLTA BUSINESS TECHNOLOGIES,
INC. magicolor and Simitri are registered
trademarks of KONICA MINOLTA BUSINESS
SOLUTIONS U.S.A., INC. All other brands and
product names are registered trademarks or
trademarks of their respective owners.

Design and specifications are subject to change
without notice.



KONICA MINOLTA

KONICA MINOLTA
BUSINESS SOLUTIONS U.S.A., INC.

100 Williams Drive
Ramsey, NJ 07446

(800) 523-2696
www.kmb.s.konicaminolta.us
www.kmb.s.konicaminolta.us/solutions